



Resino Color

Jet Black Master batch for Paint less Molded Parts

【Features】

Piano black master batches by excellent dispersed carbon black for paint less molded parts.

- Excellent dispersed carbon black enable to produce mirror surface molded parts.
- Low mold contamination due to low gas generation.
- Realization of dye removal, cost down.

【Recommended use】

Automotive: Interior part , headlight parts, engine cover, side mirror cover
Electronics: LCD television housing, office automation equipment,
video game machine
Commodities: Toys, cosmetic container, packaging materials

【Typical characteristics】

Grade name	Black ABF-T-8961
Carbon black content	40wt%
Base resin	Styrene-Acrylonitrile
Shape	Pellets
Packing	25kg paper bag
Recommended resin	PC, ABS, ASA, AES, SAN, PET, PBT, PA, Various alloy

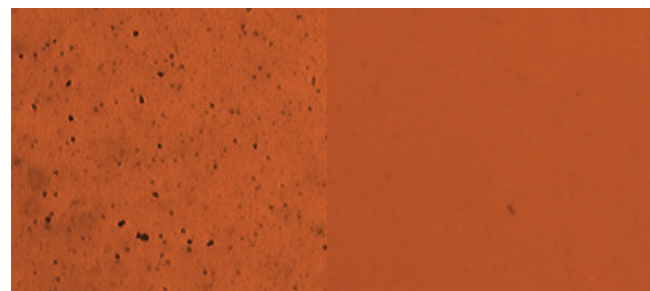
- ※ Recommended dosage: 0.5 - 5% against molding resin
- ※ We recommend compound by twin-screw extruder.

Gas generation test result



300°C, 1h heat test in glass

Dispersed status



Conventional product ABF-T-8961
1% added to ABS

【Safety information】

All ingredients of these products are complied with Voluntary Standards of JOSPFA.
Please ask us for more information.



RESINO COLOR INDUSTRY CO., LTD.

1-1-3, MIDORI, SUMIDA-KU, TOKYO, 130-0021, JAPAN

TEL : +81-3-3634-1746 FAX : +81-3-3633-6929

URL : <http://www.resinocolor.co.jp>



High Jet Black Masterbatch for Polycarbonate

Black PC - TT2803

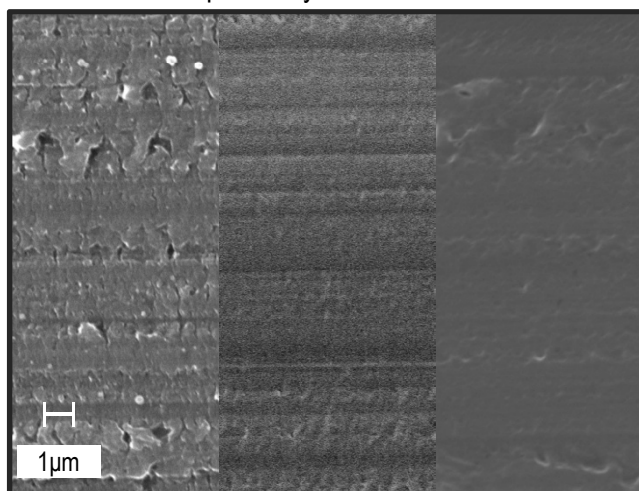
Features

- The masterbatch product fully disperses carbon black particles in a polycarbonate resin.
- Addition of the masterbatch ensures that molding products feature high jet blackness and mirror-finished surfaces without coarse grains.
- Use of the masterbatch reduces deterioration in the shock resistance of polycarbonate molded products.
- The masterbatch features excellent light resistance because it does not contain dyestuff.

Evaluation on Jet Blackness

	L*	a*	b*
PC-TT2803	0.18	0.08	-1.11
AS-based high jet black MB	0.34	-0.12	-1.21
General colored carbon MB	1.89	-0.44	-2.06
Resin to be colored	Polycarbonate		
Additive amount	1.0%		
Molding condition	Injection		
Measurement instrument	MINOLTA CM-3600A		
Measurement condition	Reflection measurement (SCE)		
AS-based high jet black MB	AS-based, carbon black 40% masterbatch		
General colored carbon MB	PS-based, carbon black 40% masterbatch		

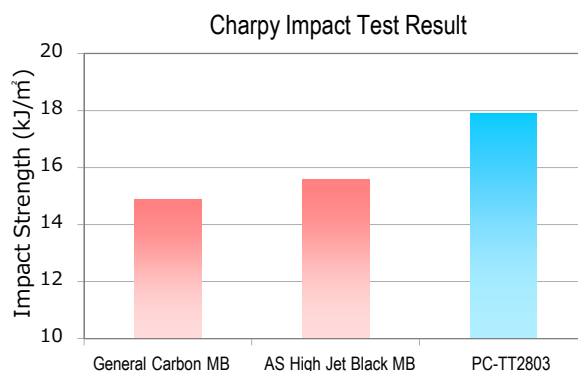
Evaluation of Dispersibility



General Carbon MB AS High Jet Black MB PC-TT2803

Resin to be colored: Polycarbonate
 Additive amount: Masterbatch 5.0%
 Imaging condition: SEM (Imaging magnification: x5,000)

Evaluation of Shock Resistance



Test piece resin to be colored: Polycarbonate
 Additive amount: 1.0%
 Test piece molding condition: Injection
 Testing machine: Digital impact tester DG-UB
 Nominal pendulum energy: 4J
 Notch type: A [JIS K7111-1(2006)]
 Direction of impact: Edge-wise

Recommended Resins

- Polycarbonate
- Polycarbonate alloys

Typical Characteristic Values

Product	Black PC-TT2803
Base resin	Polycarbonate
Shape	Pellet
Packaging style	25 kg paper bag
Recommended additive amount	0.5 to 5%
*For compounding (dilution) of the masterbatch, we recommend kneading with a twin-screw extruder.	



RESINO COLOR INDUSTRY CO., LTD.

1-1-3, Midori, Sumida-ku, Tokyo
 130-0021 Japan

URL : <http://www.resinocolor.co.jp>
 TEL : +81-3-3634-1746 FAX : +81-3-3633-6929